

Location Map

This brochure and its content is purely conceptual and not a legal offering.



LOCATION ADVANTAGES:

- 2 Km from Crossings Republik, NH-24 • 8 Km from Noida, Sec-71
- 4 Km from Noida, Sec-121 • 11 Km from Noida City Centre Metro Station
- 8.5 Km from Sai Mandir • 10 Km from Indirapuram, Ghaziabad

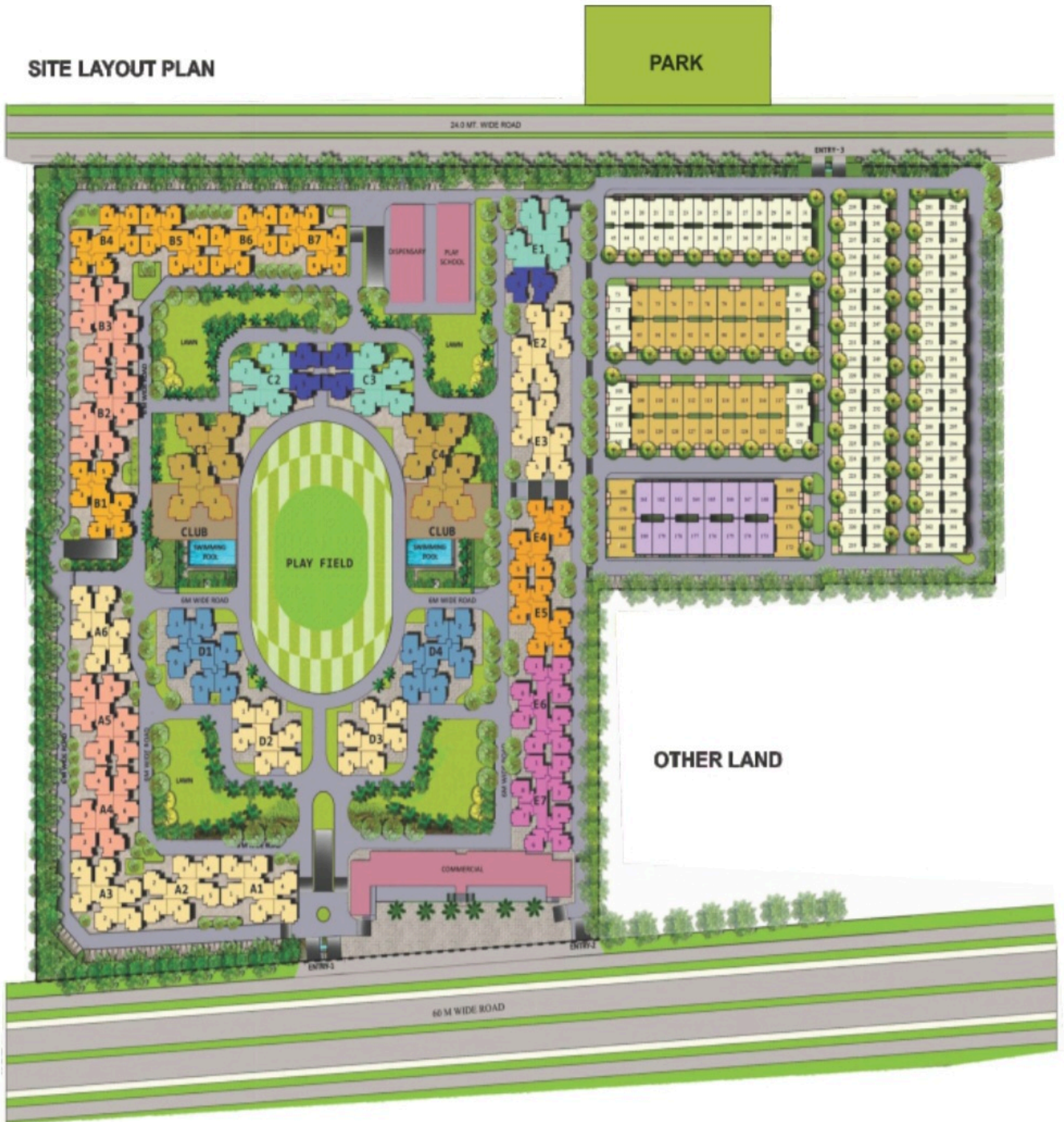


Project Funded By:



Disclaimer: Visual representation of images and elevation shown in this brochure are purely conceptual. All plans, specifications, layouts etc. are tentative and subject to variations and modifications by the company or the competent authorities and company does not bear any legal consequences for it. The areas are approx. 1 sq. mt. = 10.764 sq.ft. (10.764 sq.ft. = 1.0 sq.mt. = 10' sq.mm.) we are RERA compliant

SITE LAYOUT PLAN

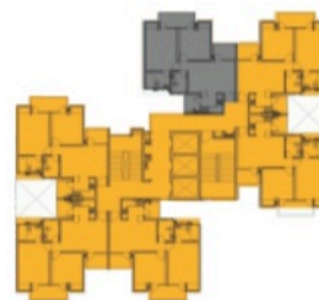




MIG - I / 2BHK
AREA : 915 SQ. FT.

- 2 Bedrooms
- Drawing
- Dining
- Kitchen
- 2 Toilets
- 3 Balconies

Area	Sq. Ft.	Sq. Mt.
Salable	915.00	85.00
Built-up	727.08	67.54
Carpet	572.65	53.20



BLOCK
B1, B4, B5, B6,
B7, E4, E5

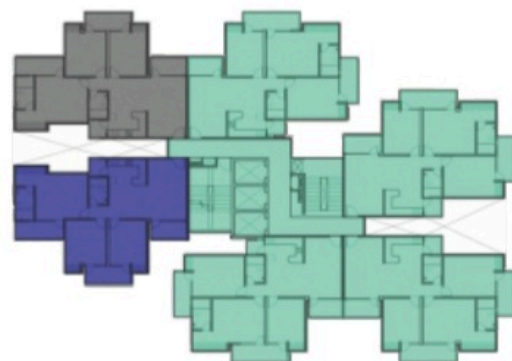


↑
ENTRY

HIG - IA / 3BHK
AREA : 1480 SQ. FT.

- 3 Bedrooms
- Drawing
- Dining
- Kitchen
- 2 Toilets
- 4 Balconies

Area	Sq. Ft.	Sq. Mt.
Salable	1480.00	137.50
Built-up	1196.98	111.20
Carpet	957.35	88.94



BLOCK
C2, C3, E1



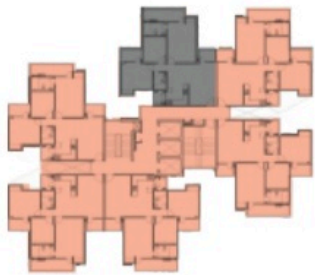
MIG - III / 2BHK+STUDY
AREA : 1350 SQ. FT.

- 2 Bedrooms
- Drawing
- Dining
- Study
- Kitchen
- 2 Toilets
- 4 Balconies

Area	Sq. Ft.	Sq. Mt.
Salable	1350.00	125.42
Built-up	1031.18	95.79
Carpet	839.59	78.00

↑
ENTRY

BLOCK
A4, A5, B2, B3



Disclaimer: Visual representation of images and elevation shown in this brochure are purely conceptual. All plans, specifications, layouts etc. are tentative and subject to variations and modifications by the company or the competent authorities and company does not bear any legal consequences for it. The areas are approx. 1 sq. mt. = 10.764 sq.ft. (10.764 sq.ft. = 1.0 sq.mt. = 10⁴ sq.mm.) we are RERA compliant

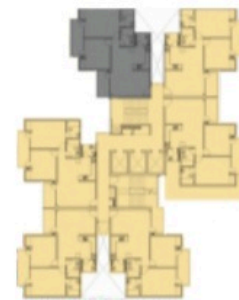


MIG - II / 2BHK
AREA : 1105 SQ. FT.

- 2 Bedrooms
- Drawing
- Dining
- Kitchen
- 2 Toilets
- 3 Balconies

Area	Sq. Ft.	Sq. Mt.
Salable	1105.00	102.66
Built-up	881.78	81.91
Carpet	697.08	64.76

↑
ENTRY



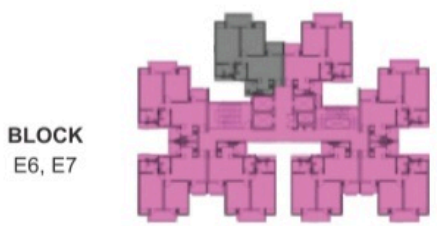
BLOCK
A1, A2, A3, A6,
D2, D3, E2, E3

FLOOR PLAN



- MIG - IV / 2BHK**
AREA : 1060 SQ. FT.
 2 Bedrooms
 Drawing
 Dining
 Kitchen
 2 Toilets
 3 Balconies

Area	Sq. Ft.	Sq. Mt.
Salable	1060.00	98.48
Built-up	770.99	71.62
Carpet	609.13	56.59



Disclaimer: Visual representation of images and elevation shown in this brochure are purely conceptual. All plans, specifications, layouts etc. are tentative and subject to variations and modifications by the company or the competent authorities and company does not bear any legal consequences for it. The areas are approx. 1 sq. mt. = 10.764 sq.ft. (10.764 sq.ft. = 1.0 sq.mt. = 10⁴ sq.mm.) we are RERA compliant

FLOOR PLAN



SUPER HIG - 3 BHK + SERV. RM.
AREA : 1820 SQ. FT.

- 3 Bedrooms
- Drawing
- Dining
- Kitchen
- 3 Toilets
- 4 Balconies
- Servant room with toilet

Area	Sq. Ft.	Sq. Mt.
Salable	1820.00	169.08
Built-up	1436.66	133.46
Carpet	1163.70	108.11

BLOCK
C1, C4

